



**DURHAM CATHOLIC
DISTRICT SCHOOL BOARD**
Learning and Living in Faith

Memorandum

To: Board of Trustees

From: Tracy Barill, Director of Education

Date: January 27, 2020

Subject: Brooklin French Immersion Study

Origin: Susie Lee-Fernandes, Superintendent of Education
Scott Grieve, Superintendent of Facilities Services
Rosemary Leclair, Superintendent of Education
Lewis Morgulis, Manager of Planning, Admissions & Capital

Recommendations

Moved by _____, seconded by _____

“THAT the Durham Catholic District School Board receives, for information the Brooklin French Immersion Study dated January 27, 2020.”

Moved by _____, seconded by _____

“THAT the Durham Catholic District School Board approve the formation of a Brooklin French Study Committee as outlined in the report dated January 27, 2020.”

Moved by _____, seconded by _____

“THAT the Durham Catholic District School Board request a report recommending a preferred option for implementation from the Brooklin French Study Committee by June 2020.”

Memorandum - Page 2

To: Board of Trustees

Re: Brooklin French Study Report

Date: January 27, 2020

Rationale

On January 27, 2020 the Board of Trustees received the Long-Term Accommodation Plan 2020-2024 (LTAP) report and approved the guiding principles and actions to be undertaken. Within the LTAP report, staff was directed to undertake a French Immersion (FI) Consolidation study in Brooklin to combine the St. Leo CS and St. John Paul II CS programs.

The Board has had declining enrolment at both St. Leo CS and St. John Paul II CS in both the Regular Track (RT) and FI programs. Given the current size of both programs, the projected enrolment for each program and the viability of each FI program, a study is required to determine where the FI and RT programs should be located for both schools. It is intended that once a resolution is identified the potential changes could be implemented for September 2021.

This report specifically recommends that:

- A Brooklin French Study Committee be formed,
- The St. Leo CS and St. John Paul II CS FI programs in Brooklin be studied,
- The committee examine a range of alternatives to create a sustainable FI population in one school location,
- The Board set up a process to gather public input throughout the study,
- Develop a recommended future location of the Brooklin FI program by June 2020.

ANALYSIS

Discovery 2023

The Board adopted a renewed strategic Plan in 2019 “Discovery 2023: Renewing the Vision” that will guide the Board over the next 3 years. This plan addresses the major strategic priorities that the Board must continue to address.

Our Catholic learning community is based on a strong foundation that has flourished for over 50 years, providing quality Catholic education to generations of diverse learners. Discovery 2023: Renewing the Vision reflects our commitment to maintaining the strength of our system, rooted in faith, with Jesus Christ at the centre of everything we do. Our commitment to Excellence, Equity and Engagement propels our strategic priorities. The plan outlines the Boards’ priorities, goals and actions, which form a harmonized system in which everyone works together, bearing witness to our motto, Learning and Living in Faith

Within the Plan, Strategic Priority 5: Managing Resources addresses the stewardship of resources is essential to the efficient and effective management and operation of the board. Financial, human resource and asset management promote a fiscally responsible Catholic school system which is integral to public trust, transparency and accountability. Management of resources oriented towards student achievement, well-being and faith formation priorities is the responsibility of each employee.

Memorandum - Page 3

To: Board of Trustees

Re: Brooklin French Study Report

Date: January 27, 2020

Goals

- To ensure allocation of resources that reflects the principles of equity and financial stewardship

Actions

- Refresh the board's Long-Term Accommodation Plan to identify system needs, program opportunities and incorporate Ministry policy directives.
- Review current resource management and environmental stewardship processes to identify potential opportunities in accordance with best practice and reflective of Catholic social teachings.

The Brooklin French Study is aligned with Strategic Priority 5: Managing Resources which will ensure that the existing FI programs reflect the principles of equity and financial stewardship.

Previous French Studies

The Board has conducted several French Studies starting in 2010 to address the proposed expansion of FI and Extended French (EF) programs, and to address the creation of a Single Track (ST) FI program. The following lists the dates of the studies. Appendix 1 includes a synopsis of the board's actions with respect to each study:

- December 2011 - Accommodation, Utilization and Program Directions - 2011 to 2021
- October 2014 - French Program Study
- November 2014 - North Ajax French Immersion Boundary Report
- November 2014 – North Oshawa French Immersion School Boundary Report
- January 2016 – Long Term Accommodation Plan 2016-2020
- January 2017 – Long Term Accommodation Plan 2017-2021
- January 2018 – Long Term Accommodation Plan 2018-2022
- October 2018 – French Programs Update
- January 2019 – Long Term Accommodation Plan 2019-2023
- October 2019 – French Immersion Implementation at Monsignor Paul Dwyer CHS
- November 2019 – French Immersion Program Update
- January 2020 – Long Term Accommodation Plan 2020-2024

Historical Enrolment

The implementation of FI programs in Brooklin started with a new Grade 1 FI program and Grade 4 EF program at St. Leo CS in 2010. Overall, the Board introduced 5 FI programs in 2010 and additional programs in 2012 and 2013. In 2013 the FI program was split with the opening of St. John Paul II CS and students in Grades 1 - 4 attended the new program. By 2017 both schools had a complete Grade 1-8 FI program.

Memorandum - Page 4

To: Board of Trustees

Re: Brooklin French Study Report

Date: January 27, 2020

In 2013 the Board began to phase out the Grade 4 EF program from its schools. As of 2019 there are no EF students in grades 4-8 at either school, and the EF program has been discontinued within the Board.

Table 1: St. John Paul II CS Historical FI Enrolment

Year	Gr1	Gr2	Gr3	Gr4	Gr5	Gr6	Gr7	Gr8	Total
2013	24	16	18	13	0	0	0	0	71
2014	18	22	15	17	13	0	0	0	85
2015	31	14	22	14	19	16	0	0	116
2016	26	29	13	22	13	19	15	0	137
2017	20	25	27	14	23	11	17	14	151
2018	24	17	24	29	15	25	8	15	157
2019	14	21	15	26	28	15	25	6	150

Table 2: St. Leo CS Historical FI Enrolment

Year	Gr1	Gr2	Gr3	Gr4	Gr5	Gr6	Gr7	Gr8	Total
2010	38	0	0	0	0	0	0	0	38
2011	45	33	0	0	0	0	0	0	78
2012	45	41	31	0	0	0	0	0	117
2013	19	14	11	17	0	0	0	0	61
2014	24	20	27	22	17	0	0	0	110
2015	19	22	14	27	22	17	0	0	121
2016	11	15	20	11	24	22	10	0	113
2017	13	14	12	21	11	22	21	8	122
2018	9	11	14	11	20	11	17	19	112
2019	11	9	9	12	12	20	9	18	100

Program Demission

One of the important factors that affects the viability of FI programs is the rate of demission in which students leave the program. The reasons for demission from the FI program include the following:

- Transfer out of an FI program to an RT program,
- Relocation to another FI program at a different school,
- Relocation to a school in another Board,

Every FI program experiences demission to one extent or another, and it plays an important factor in determining the projected number of FI students in subsequent years. In some cases there is a net gain after grade 1 from students entering FI programs from another Board, or relocating from one FI program to another within the Board.

The demission rates over a 3-year and 5-year period for the two Brooklin FI schools are generally below the overall demission rate experienced by the Board. The one anomaly is a growth of 27% from 2016-2017 at St. Leo CS based on an increase of three students from Grade 1 to 2.

Memorandum - Page 5

To: Board of Trustees

Re: Brooklin French Study Report

Date: January 27, 2020

Tables 3 and 4 below outline the impact of FI demission since 2014 when both programs were established.

Table 3: St. John Paul II CS Historical Retention

Year	Gr1	Gr2	Gr3	Gr4	Gr5	Gr6	Gr7	Gr8	Total
2014		92%	94%	94%	100%				95%
2015		78%	100%	93%	112%	123%			101%
2016		94%	93%	100%	93%	100%	94%		96%
2017		96%	93%	108%	105%	85%	89%	93%	96%
2018		85%	96%	107%	107%	109%	73%	88%	95%
2019		88%	88%	108%	97%	100%	100%	75%	94%

3-year Average	90%	92%	108%	103%	98%	87%	86%	95%
5-year Average	88%	94%	103%	103%	103%	89%	86%	96%

Table 4: St. Leo CS Historical Retention

Year	Gr1	Gr2	Gr3	Gr4	Gr5	Gr6	Gr7	Gr8	Total
2014		105%	193%	200%	100%				150%
2015		92%	70%	100%	100%	100%			92%
2016		79%	91%	79%	89%	100%	59%		83%
2017		127%	80%	105%	100%	92%	95%	80%	97%
2018		85%	100%	92%	95%	100%	77%	90%	91%
2019		100%	82%	86%	109%	100%	82%	106%	95%

3-year Avg	104%	87%	94%	101%	97%	85%	92%	94%
5-year Avg	97%	85%	92%	99%	98%	78%	92%	92%

Projected FI Enrolment 2020-2029

The projected enrolment in the FI programs at St. Leo CS and St. John Paul II CS is anticipated to decline from 2020 to 2029 based on generally declining enrolment at all feeder schools in Brooklin in the next 5 years. This decline is precipitated by smaller Grade 1 classes entering each school and larger Grade 8 classes graduating. Overall the two programs will decline from a combined 250 students in Grades 1-8 in 2019 to 158 students in Grades 1-8 in 2029. The decline may be accelerated in the short term by a lower than expected registration in January 2020 at both schools.

Memorandum - Page 6

To: Board of Trustees

Re: Brooklin French Study Report

Date: January 27, 2020

Table 5: St. John Paul II CS Projected FI Enrolment

Year	Gr1	Gr2	Gr3	Gr4	Gr5	Gr6	Gr7	Gr8	Total
2019	14	21	15	26	28	15	25	6	150
2020	19	13	20	15	26	27	13	24	157
2021	13	17	12	20	15	25	23	12	138
2022	13	12	16	12	20	15	22	22	132
2023	13	12	11	16	12	19	12	21	117
2024	13	12	11	11	16	12	16	12	104
2025	13	12	11	11	11	16	10	16	101
2026	13	12	11	11	11	11	14	10	93
2027	13	12	11	11	11	11	9	13	92
2028	13	12	11	11	11	11	9	9	88
2029	13	12	11	11	11	11	9	9	88

Table 6: St. Leo CS Projected FI Enrolment

Year	Gr1	Gr2	Gr3	Gr4	Gr5	Gr6	Gr7	Gr8	Total
2019	11	9	9	12	12	20	9	18	100
2020	14	11	8	8	11	12	15	8	88
2021	13	14	10	7	8	11	9	13	85
2022	13	13	13	9	7	8	9	8	78
2023	12	12	12	12	8	7	6	7	77
2024	12	12	11	11	11	8	5	5	76
2025	12	12	11	10	10	11	6	4	77
2026	10	12	11	10	10	10	8	5	76
2027	10	10	11	10	10	10	8	7	75
2028	10	10	9	9	9	9	7	6	72
2029	10	10	9	9	9	9	7	6	70

Capacity and Utilization

St. John Paul II CS was constructed in 2013 with a capacity of 481 pupil places. The creation of an Early ON centre in 2018 within the school reduced the capacity to the current 458 pupil places. The enrolment for the school for both the RT and FI programs is projected to decline to a low of 273 students in 2026 before development growth for the Brooklin Expansion Area raises projections to around 300 students by 2029. The school will operate below 80% of its capacity over the next 10 years.

Memorandum - Page 7

To: Board of Trustees

Re: Brooklin French Study Report

Date: January 27, 2020

St. Leo CS was constructed in 1998 and had an addition in 2004. The school had a capacity of 453 pupil places until 2018 when a new child care centre opened. The conversion of 8 classrooms resulted in a reduction to the school's capacity to the current 266 pupil places. The enrolment for the school for both the RT and FI programs is projected to decline to a low of 181 students in 2023-2024. In time the population is expected to increase to 208 students by 2029. The school will operate below 80% of its capacity over the next 10 years. With growth from the Brooklin expansion area, there will be increased enrolment in Brooklin and eventually additional growth in the FI program over time.

Table 7: Capacity and Utilization

St. John Paul II	2019	2020	2021	2022	2023	2024	2025	2026	2027	2028	2029
Regular Track	221	201	197	184	182	177	175	180	188	198	213
French Immersion	150	157	138	132	117	104	101	93	92	88	88
Total	371	358	336	316	299	281	276	273	280	286	301
Capacity	458	458	458	458	458	458	458	458	458	458	458
Utilization	81%	78%	73%	69%	65%	61%	60%	60%	61%	62%	66%

St. Leo CS	2019	2020	2021	2022	2023	2024	2025	2026	2027	2028	2029
Regular Track	121	115	112	106	104	105	106	113	117	128	138
French Immersion	100	88	85	78	77	76	77	76	75	72	70
	221	203	198	184	181	181	183	189	192	200	208
Capacity	266	266	266	266	266	266	266	266	266	266	266
Utilization	83%	76%	74%	69%	68%	68%	69%	71%	72%	75%	78%

Program Viability

One of the primary aims of the Brooklin French Study is to create viable sustainable classes at Grade 1 on entry and in each subsequent grade going forward. Since 2016 the program at St. Leo CS has experienced low subscription for FI and the grade 1 class averages 11 students per year. The FI registration to date for St. Leo CS is 5 for September 2020. For St. John Paul II CS the Grade 1 class size had averaged 23 students per year from 2016-2018 but declined to 14 students in 2019. To date registration for FI is 8 students for the school for September 2020.

Based on these registrations, and accounting for demission within the program, the projected number of classes and the class sizes will become increasingly unviable over time at two locations. As such, the Board should examine the consolidation of the two programs into one.

Memorandum - Page 8

To: Board of Trustees
Re: Brooklin French Study Report
Date: January 27, 2020

Committee Structure and Membership

In order to provide board input and engagement, staff recommend that a study committee be formed with broad representation to include staff and administration from each of the affected schools to take part in the study.

The task of the Committee is to review all of the potential solutions to address the FI programs at St. Leo CS and St. John Paul II CS, and recommend a preferred option for the consolidation of the two existing FI programs. In addition, the committee is tasked with reviewing all available data and previous FI reports to address the recommended implementation of a preferred alternative for the Board of Trustees to consider.

The recommended membership of the Brooklin French Study Committee is as follows:

1. Susie Lee-Fernandes, Superintendent of Education (Chair)
2. Scott Grieve, Superintendent of Facilities Services
3. Ryan Putnam, Superintendent of Business
4. Rosemary Leclair, Superintendent of Education
5. Lewis Morgulis, Manager of Planning, Admissions and Capital,
6. Jackie McVeigh, Manager of Human Resources
7. Kelly Mechoulan, Manager of Durham Student Transportation Services
8. David Malleau, Principal St. Leo Catholic School
9. Stephanie Richard, Principal St. John Paul II Catholic School
10. James Tremblay, Principal St. Bridget Catholic School
11. French Language Consultant
12. Jennifer Bastarache, Communications Manager
13. Luetasha Watkins, Manager Early Learning and Childcare
14. School Council Chair (Representative for each school)
15. OECTA (Elementary Representatives for each school)
16. CUPE (Representatives for each school)
17. YMCA (Child Care Operators)
18. Early ON Representative

Once the report is approved by the Board of Trustees, several representatives will have to be named by each of the organizations listed above.

Memorandum - Page 9

To: Board of Trustees

Re: Brooklin French Study Report

Date: January 27, 2020

Meeting Dates

Following the creation of the committee, a number of meetings are required to be held for the development of the options.

Committee Meetings

- February 11, 2020 – Pope Francis Centre 1-3 pm
- February 20, 2020 – Pope Francis Centre 1-3 pm
- March 12, 2020 – St. Francis of Assisi Catholic Education Centre 1-3 pm
- April 2, 2020 – St. Francis of Assisi Catholic Education Centre 1-3 pm
- April 16, 2020 – St. Francis of Assisi Catholic Education Centre 9-11 am

Public Meetings

- February 20, 2020 – St. Leo Catholic School 7-9 pm
- April 2, 2020 – St. John Paul II Catholic School 7-9 pm
- April 28, 2020 – St. Bridget Catholic School 7-9 pm

Next Steps

Following approval of the reports recommendations staff will:

- Contact all members of the Brooklin French Study Committee
- Prepare mechanisms to receive public input via email and phone
- Publish the meeting dates for public input
- Provide regular updates to the Board of Trustees
- Prepare a follow up report for June 2020

TB/SG/SF/LM/tc

Attachments

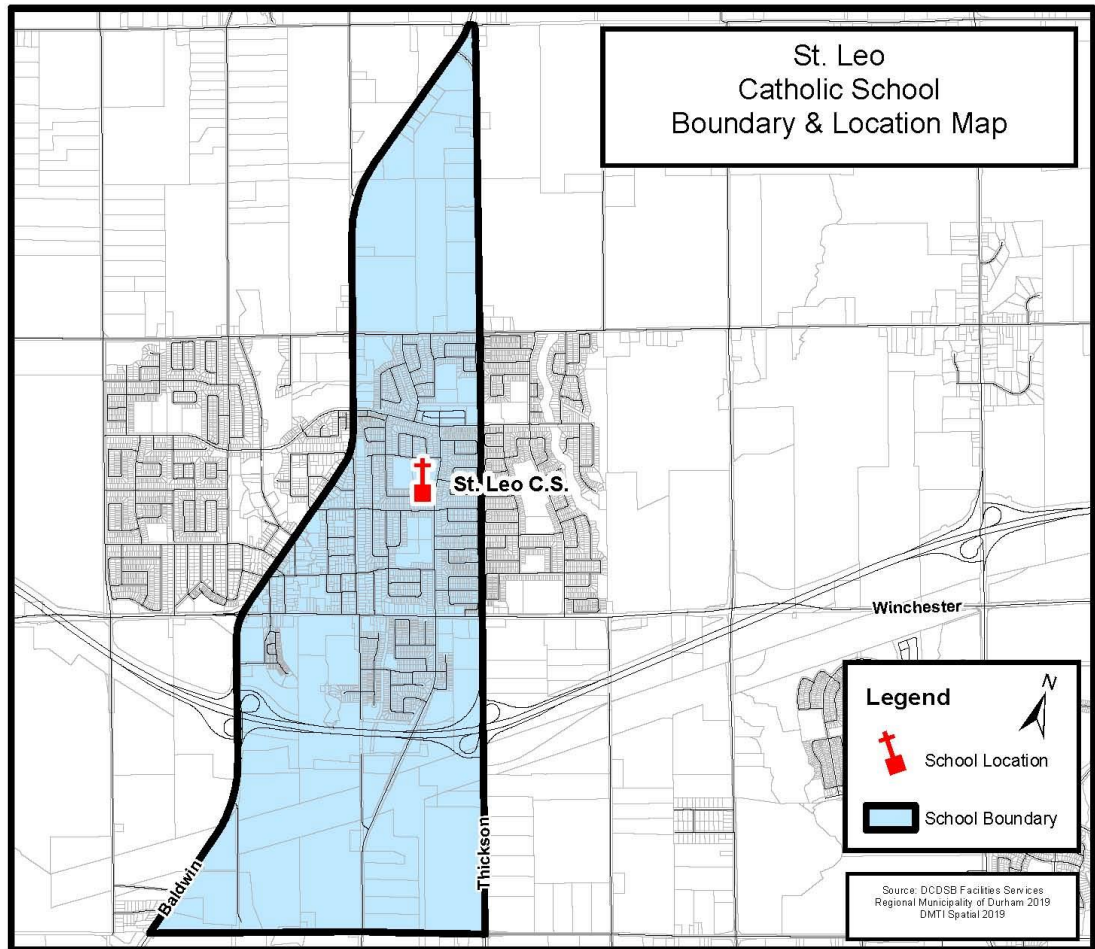
APPENDIX 1:

<u>Year</u>	<u>Report and Actions</u>
2011	Accommodation, Utilization and Program Directions - 2011 to 2021 New FI and EF Programs identified for 2012 at the following schools: St James CS, Mother Teresa CS, St. Elizabeth Seton CS, St. Christopher CS, St. John the Evangelist CS
2012	Unnamed Brooklin East CES Boundary Report New FI Program to be started at Blessed Pope John Paul II CS 2013
2013	Secondary French Study All Saints CSS FI Phases out St. Mary CSS FI starts Father Leo J Austin CSS FI starts
2014	French Program Study EF Programs to phase out with 2 locations remaining New FI program to be located at Unnamed North Oshawa CES (now St Kateri Tekakwitha CS) New FI program to be located at St. Joseph CS (Uxbridge) FI and EF programs at St. Patrick CS and Mother Teresa CS to be consolidated RT program at St. Patrick relocated to St. Jude CS Notre Dame CSS FI starts
2016	Long Term Accommodation Plan 2016-2020
2018	Long Term Accommodation Plan 2018-2022 Review potential locations for additional single-track French Immersion programs
2018	French Program Study Reviewed future single-track locations Determined areas where consolidation may be required Examined out-of-area impacts
2019	Long Term Accommodation Plan 2019-2023 Initiate a boundary review between St. Christopher Catholic School and St. Thomas Aquinas Catholic School; Review the future of the St. Kateri Tekakwitha Catholic School French Immersion program location; Review the viability of the French Immersion program in Uxbridge;
2019	French Immersion Program Update Out-of-area applications for kindergarten students will not be accepted at the following schools St. Christopher CS; St. James CS; St. John the Evangelist CS; St. Kateri Tekakwitha CS, St. Patrick CS

APPENDIX 2:

ST LEO CS SCHOOL PROFILE

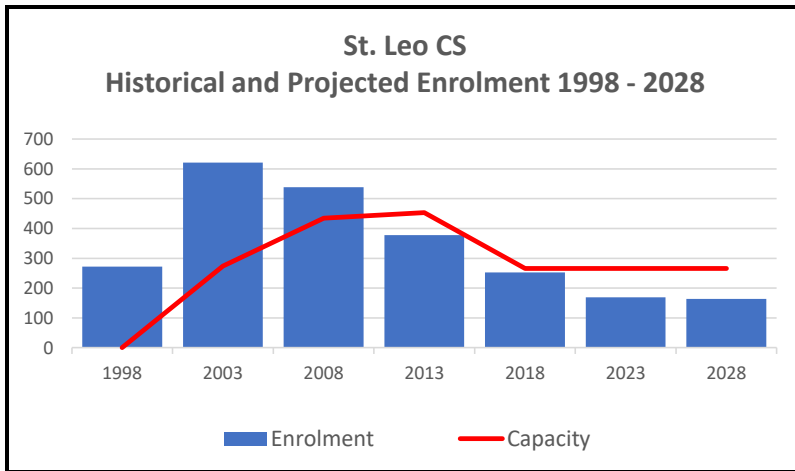
Boundary Map



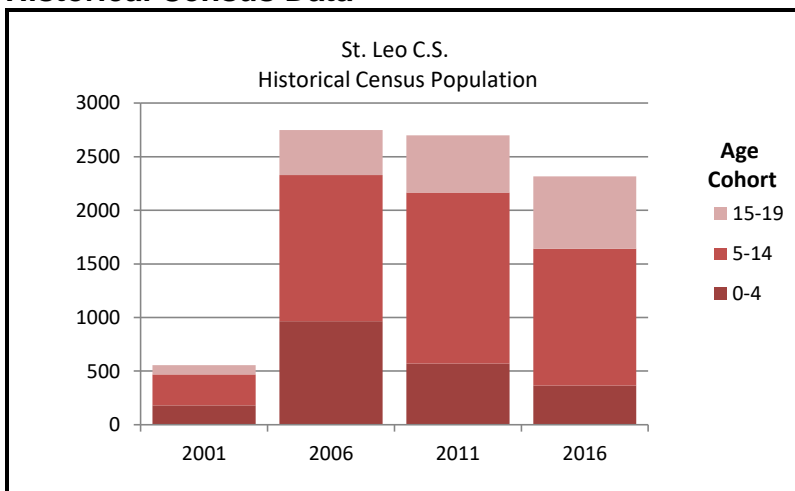
St. Leo Catholic School

Address: 120 Watford Street, Brooklin, L1M 1H2
Grades: JK - Gr8
Capacity: 266 pupil places
Programs: English JK-8, FI Gr 8
Child Care: YMCA Preschool and School aged
Year Built: 1998

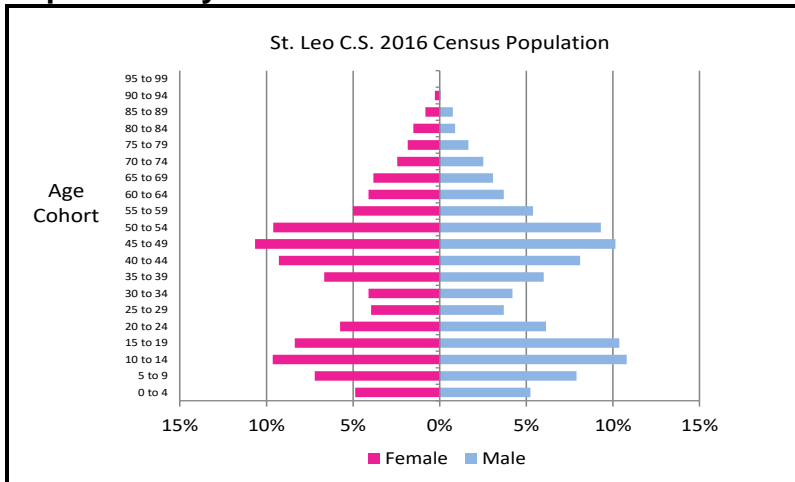
Historical Enrolment



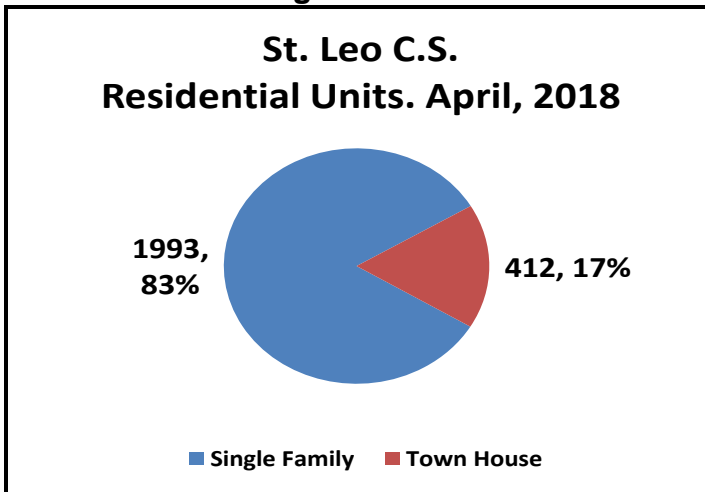
Historical Census Data



Population Pyramid 2016 Census



Residential Housing



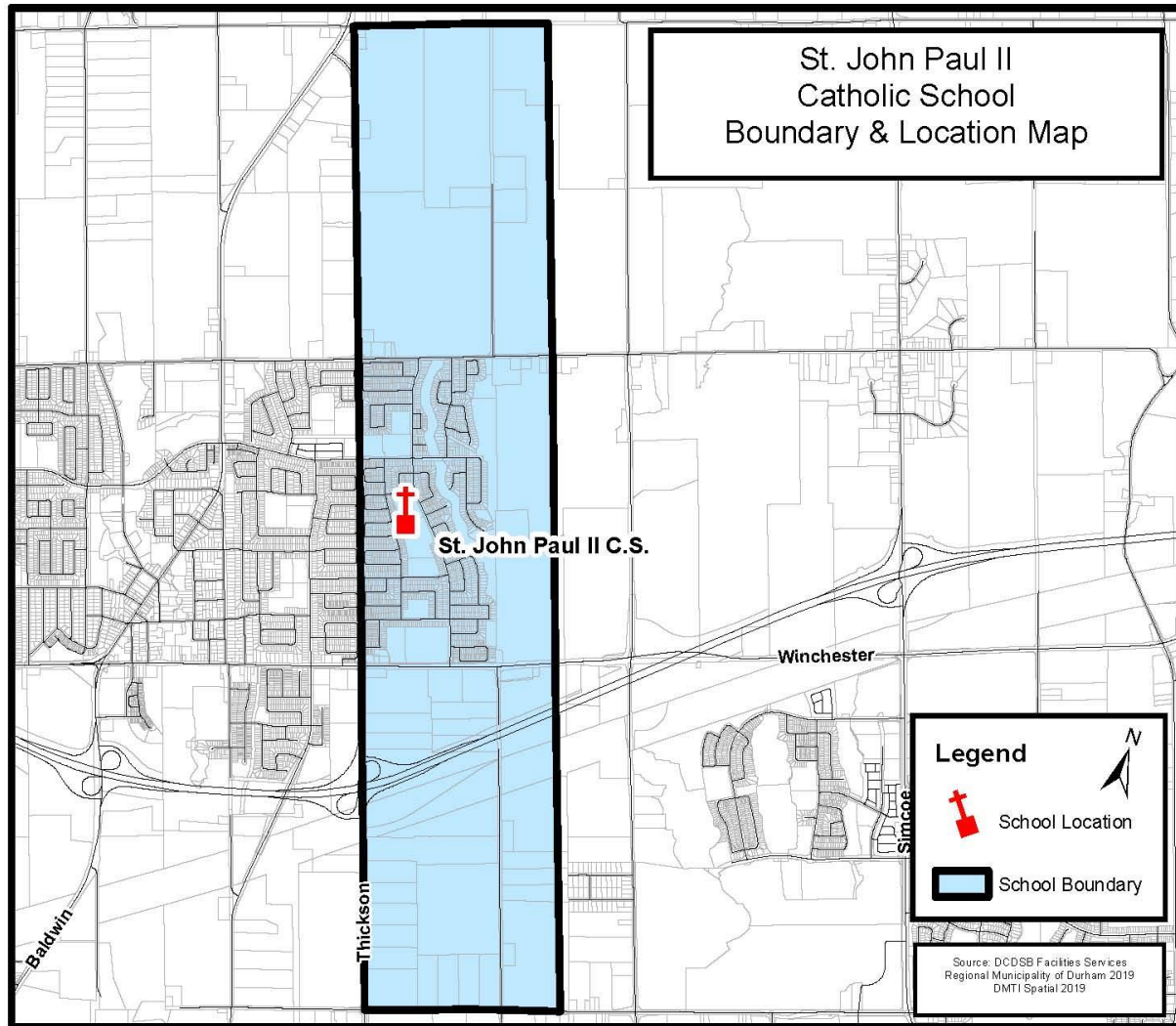
St. Leo Catholic School was constructed in its current location in 1998 and added onto in 2004. The addition was converted into a child care centre in 2018 and serves both a preschool and school aged population. The enrolment at St. Leo CS includes both a Gr JK-8 English and Gr 1-8 French Immersion (FI) program. Since 2003 the enrolment has declined as new schools were constructed within the Brooklin Community.

The St. Leo CS boundary includes 2,405 units of housing and has a high proportion of preschool and school aged students which represents the high-water mark for enrolment. Since 2006 however, the number of preschool and school aged children have declined significantly.

The proposed Brooklin expansion area holds 800 units within St. Leo CS boundary however most future development is located in the St. Bridget CS boundary. Infill development in the boundary amounts to 186 units most of which are apartment units. The long-term projection for the school is for continued decline and the school will operate well below its reduced capacity of 266 students over the next 10 years. Ultimately the Board has to examine the viability of both the English and FI programs.

St. John Paul II CS Profile

Boundary Map



St. John Paul II Catholic School

Address: 160 Cachet Blvd Brooklin, L1M 2L9

Grades: JK - Gr8

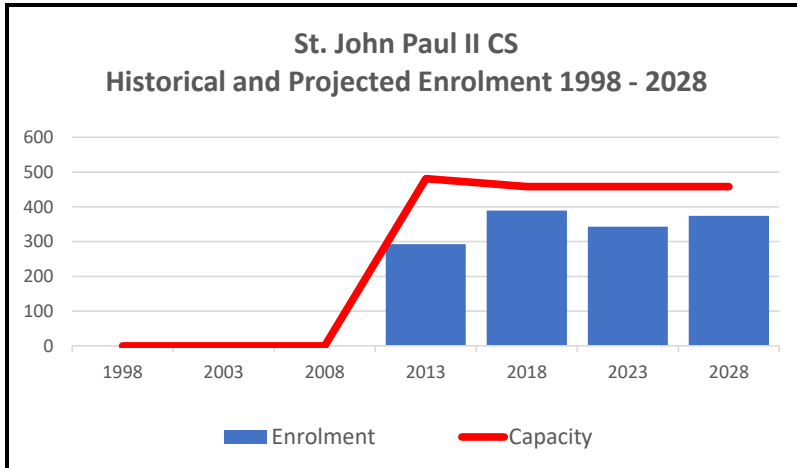
Capacity: 458 pupil places

Programs: English, FI Gr 1 - 8

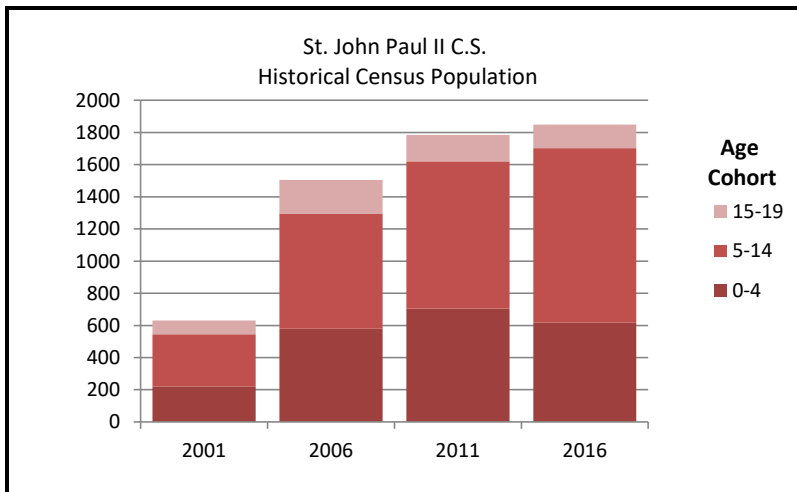
Child Care: YMCA Before and After School Program, Early ON

Year Built: 2013

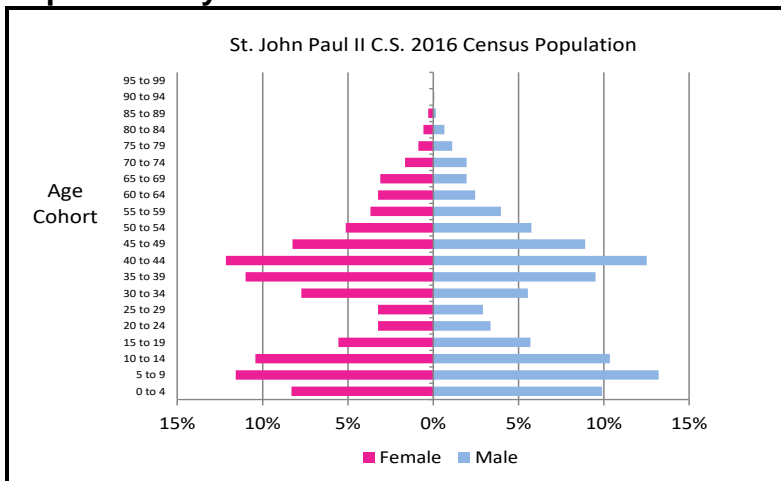
Historical Enrolment



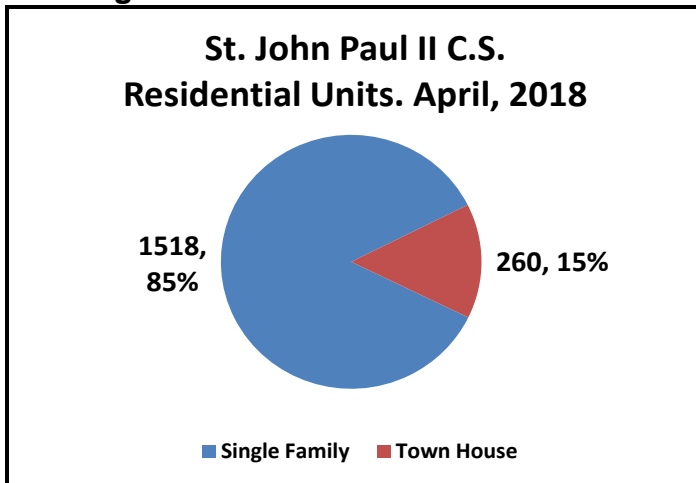
Historical Census Data



Population Pyramid



Housing Data



St. John Paul II Catholic School was constructed in 2013. The school serves the area of Brooklin east of Thickson Road. A French Immersion (FI) program was located in the school when it opened in 2013. An Early ON centre serving parents and pre-school children was added to the school in 2017.

The school boundary contains 1,768 units of housing and this total is the lowest in the Board making the long-term projections dependent on additional development growth in order for the school's enrolment to grow. The growth within the boundary includes 3,575 units in the Brooklin expansion area which will augment the school's population

While the census data has indicated growth over the last four census periods, the school's pre-school population started to decline in 2016 and is measurably smaller than the other elementary school aged cohorts.

Over time the FI and English program locations at both St. John Paul II Catholic School and St. Leo Catholic School require review and potentially consolidation given the size of the grades in each school and program.